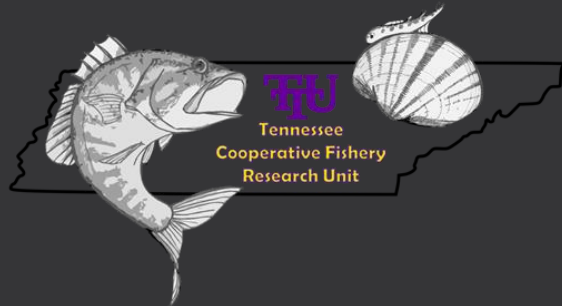


# The History of Freshwater Mussels in the Duck River



Kristin Irwin Womble

[kirwin@tntech.edu](mailto:kirwin@tntech.edu)

**McCLUNG**  
**MUSEUM** of  
Natural History  
and Culture



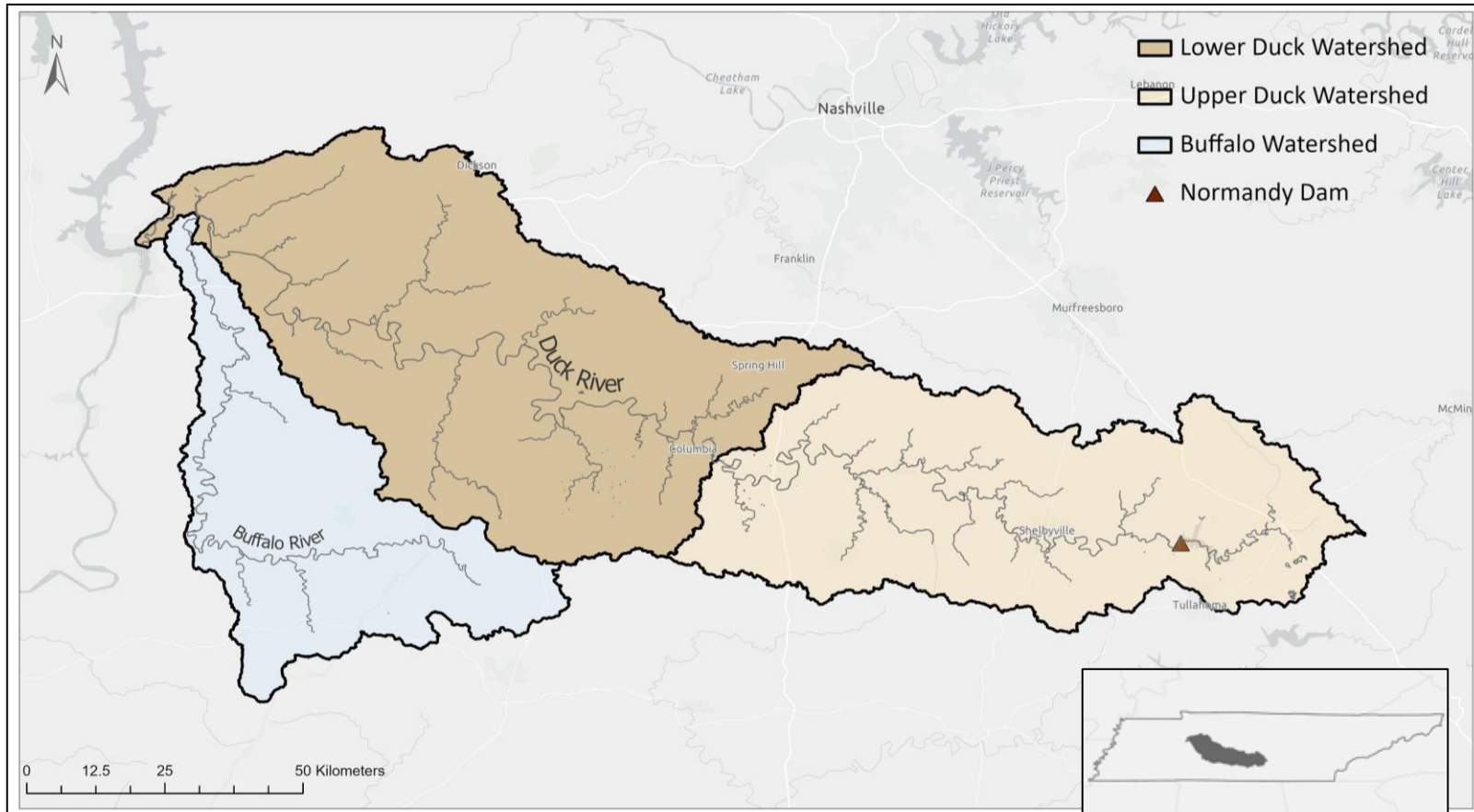
# Tennessee Mussel Diversity

141 species historically | 53 federally listed | 13 petitioned



# Duck River, Tennessee

150+ species of fish | 60+ extant mussels | 22+ snails





# 15 Listed Species



**Fluted Kidneyshell**



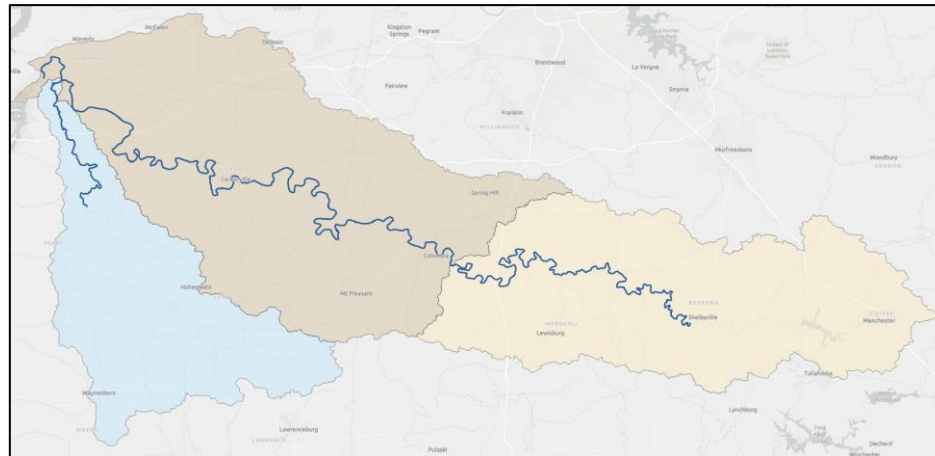
**Cumberlandian  
Combshell**



**Duck River  
Dartersnapper**



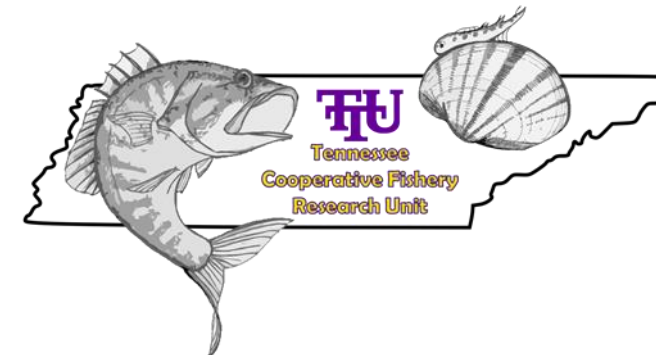
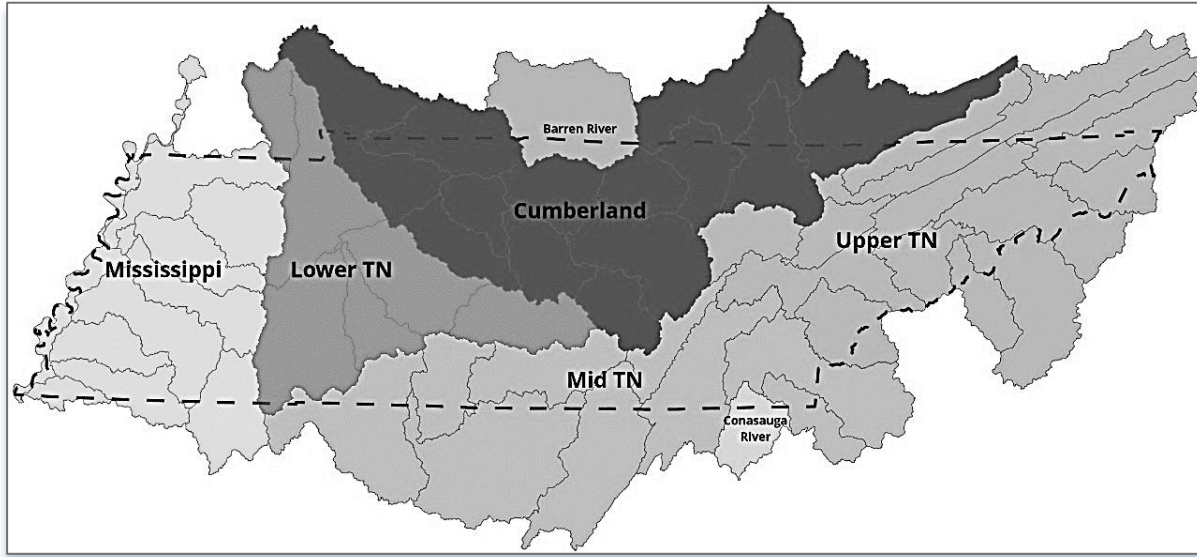
**Snuffbox**



**Critical Habitat**



**Slabside  
Pearlymussel**



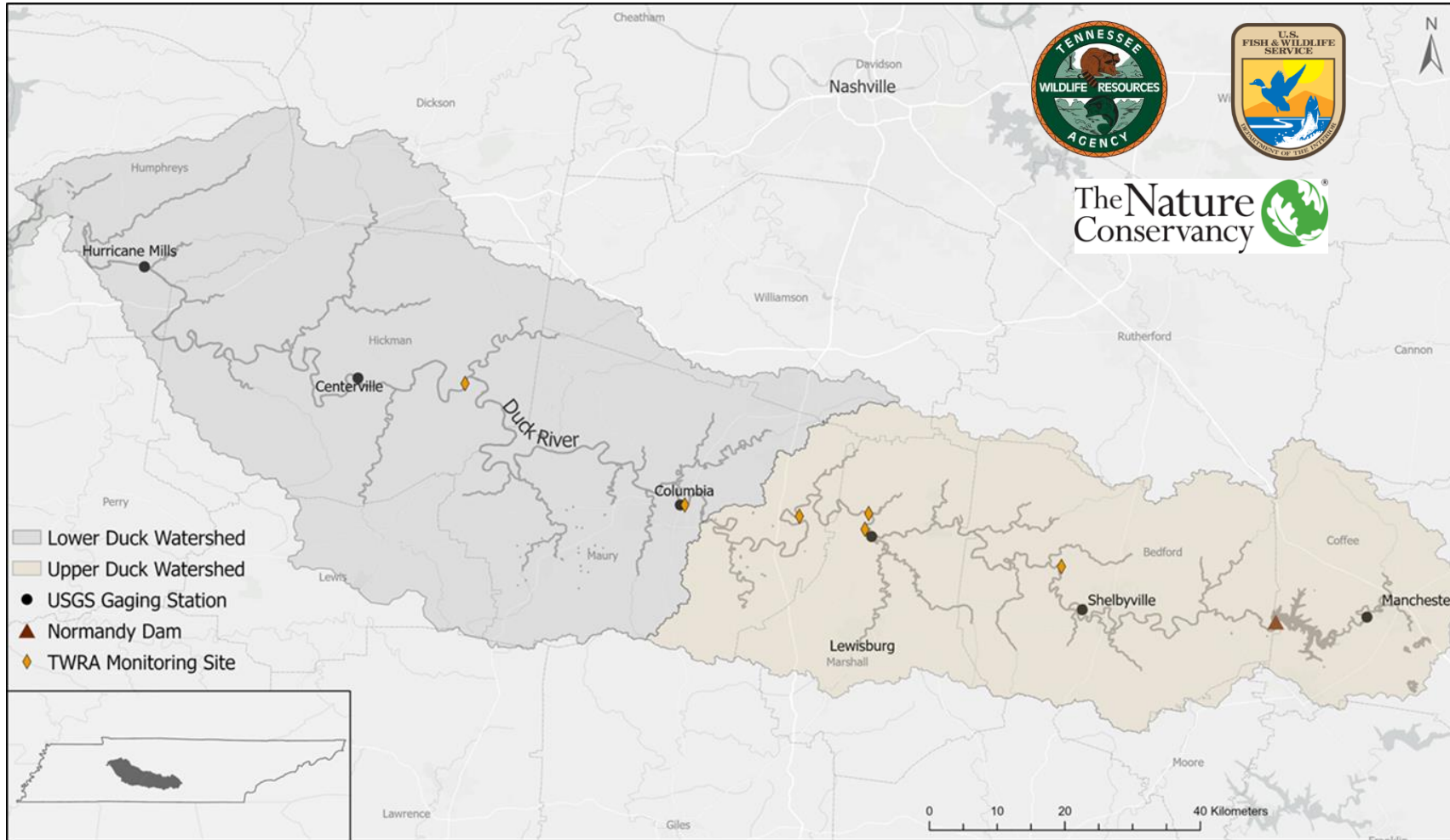


# Propagation and Reintroduction





# Long-term Monitoring





Access

## 7,000+ Records

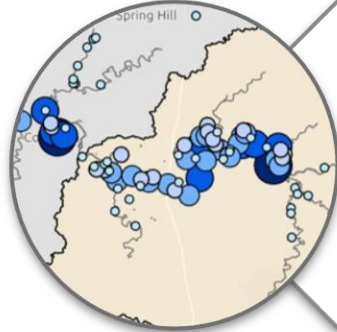
- 70+ species
- 1800s-2022
- 200+ sites







Depict accurate  
species distributions



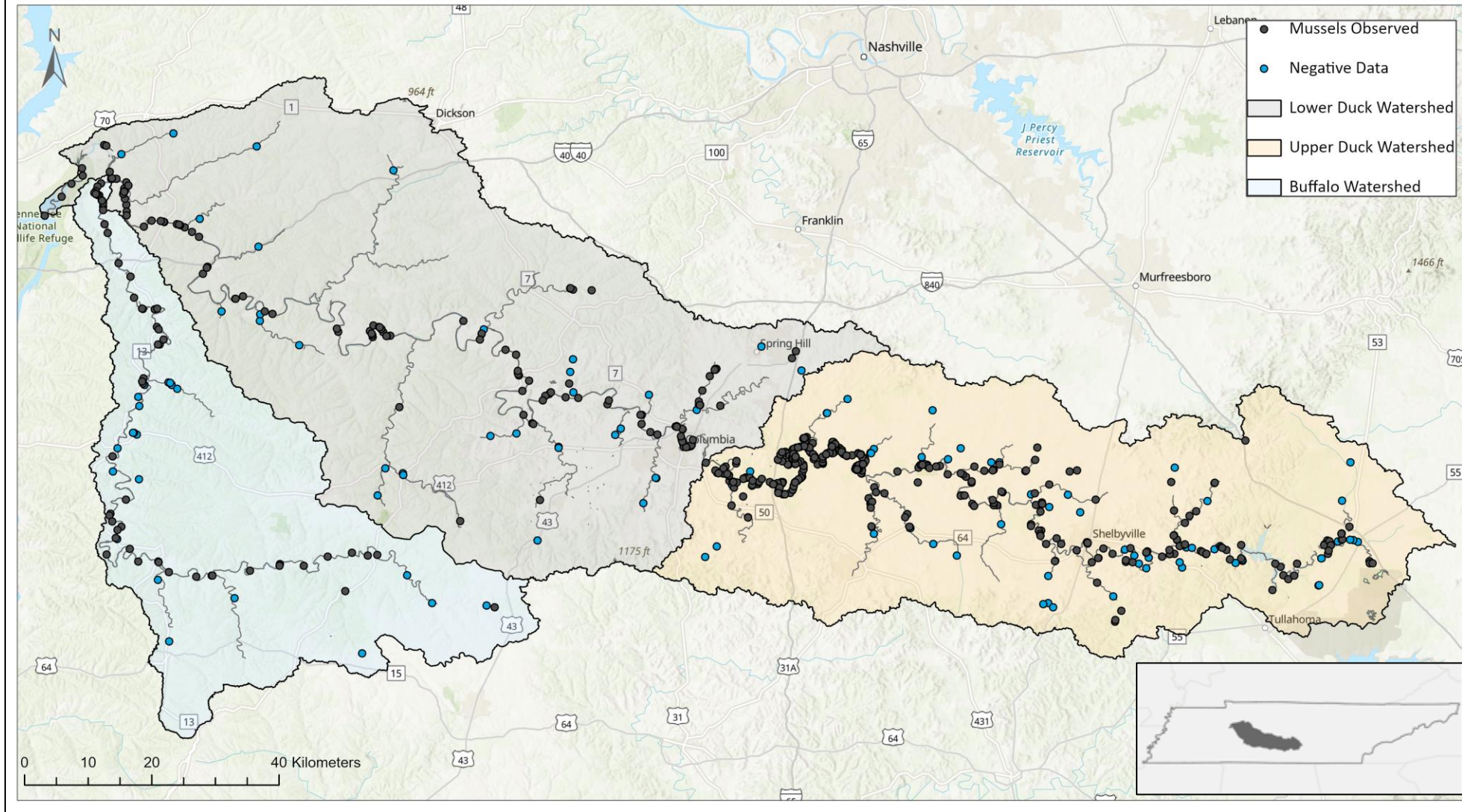
Describe long-term  
community and  
population trends



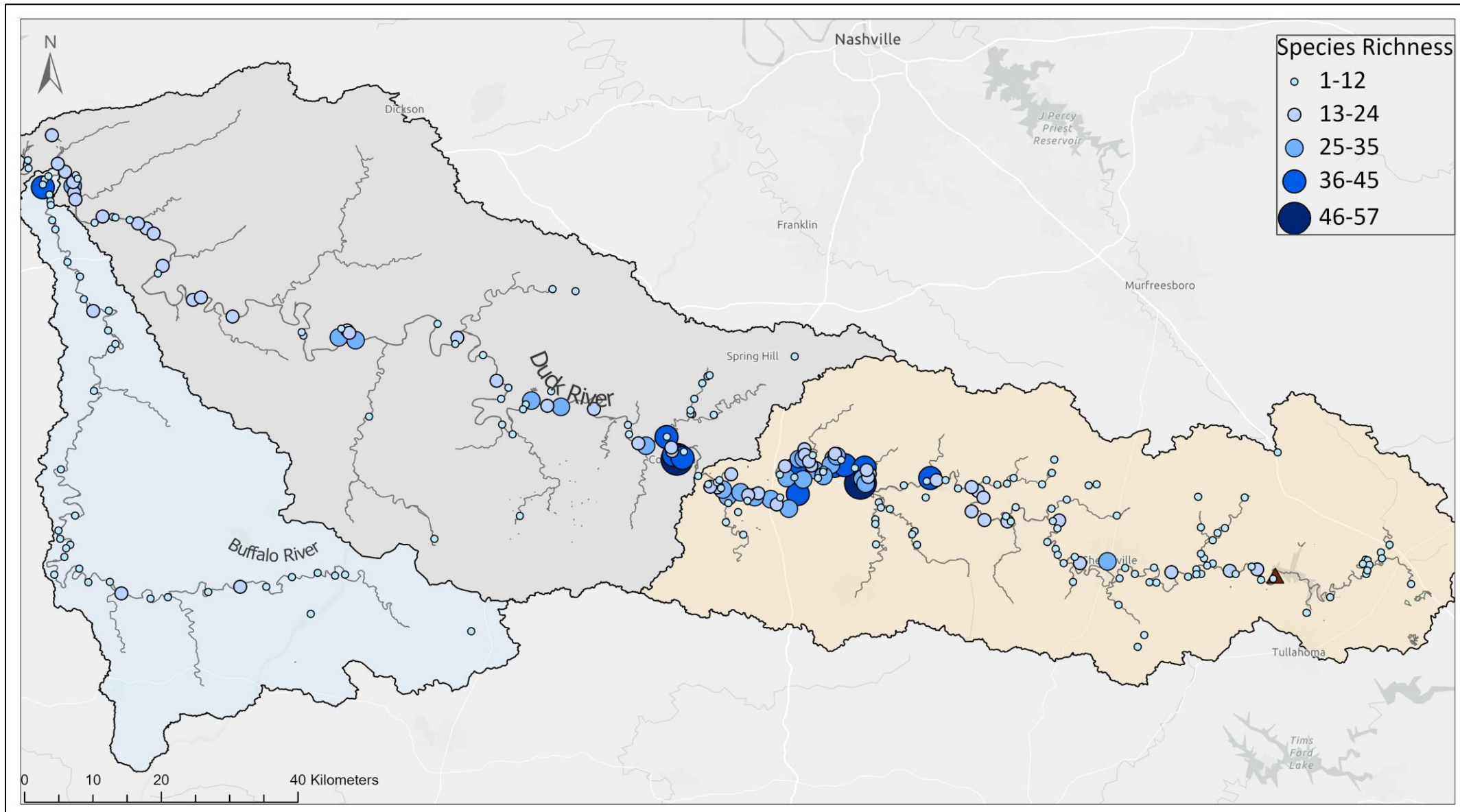
Highlight  
conservation priorities



## Freshwater Mussel Survey Coverage in the Duck River Drainage

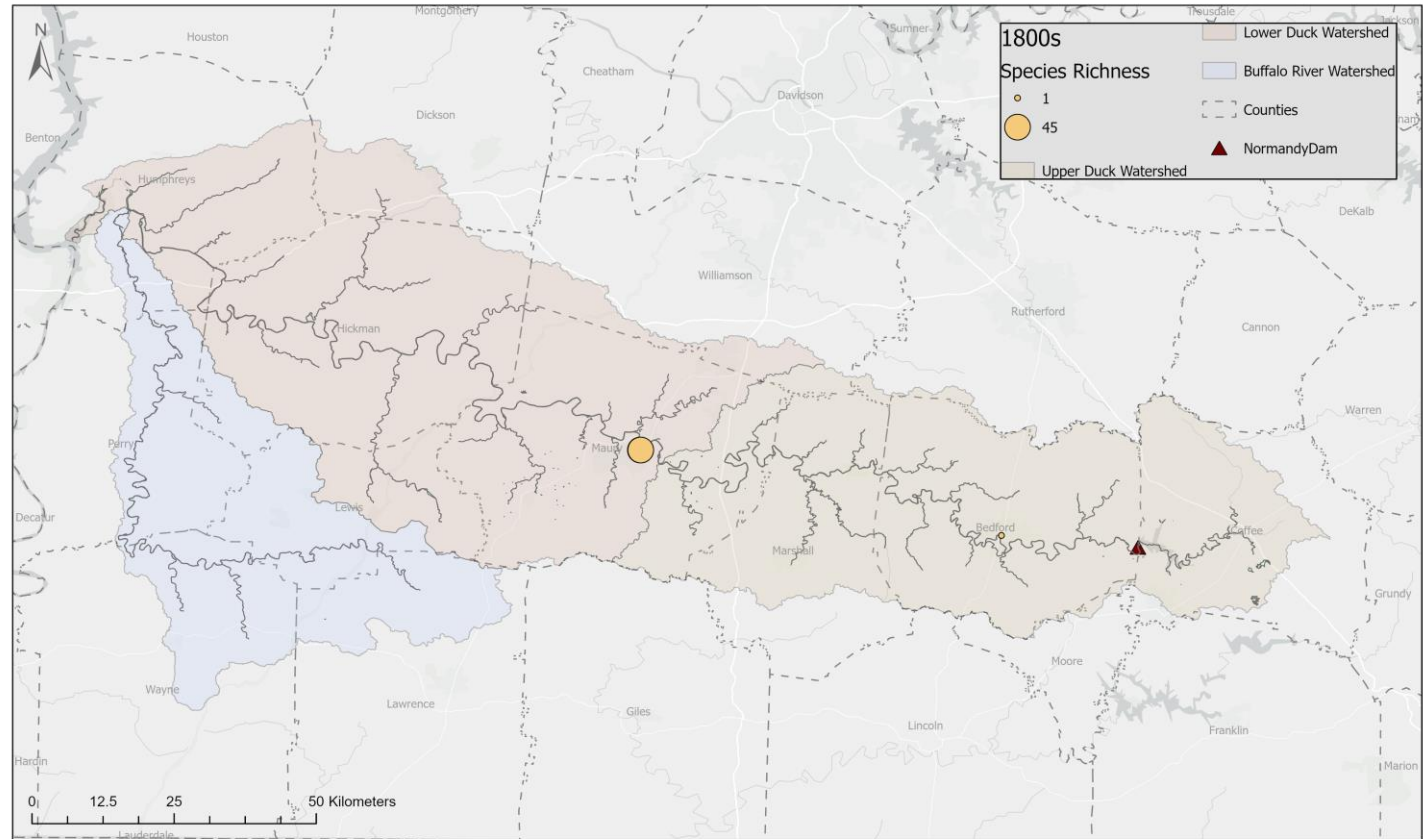






# 1800s

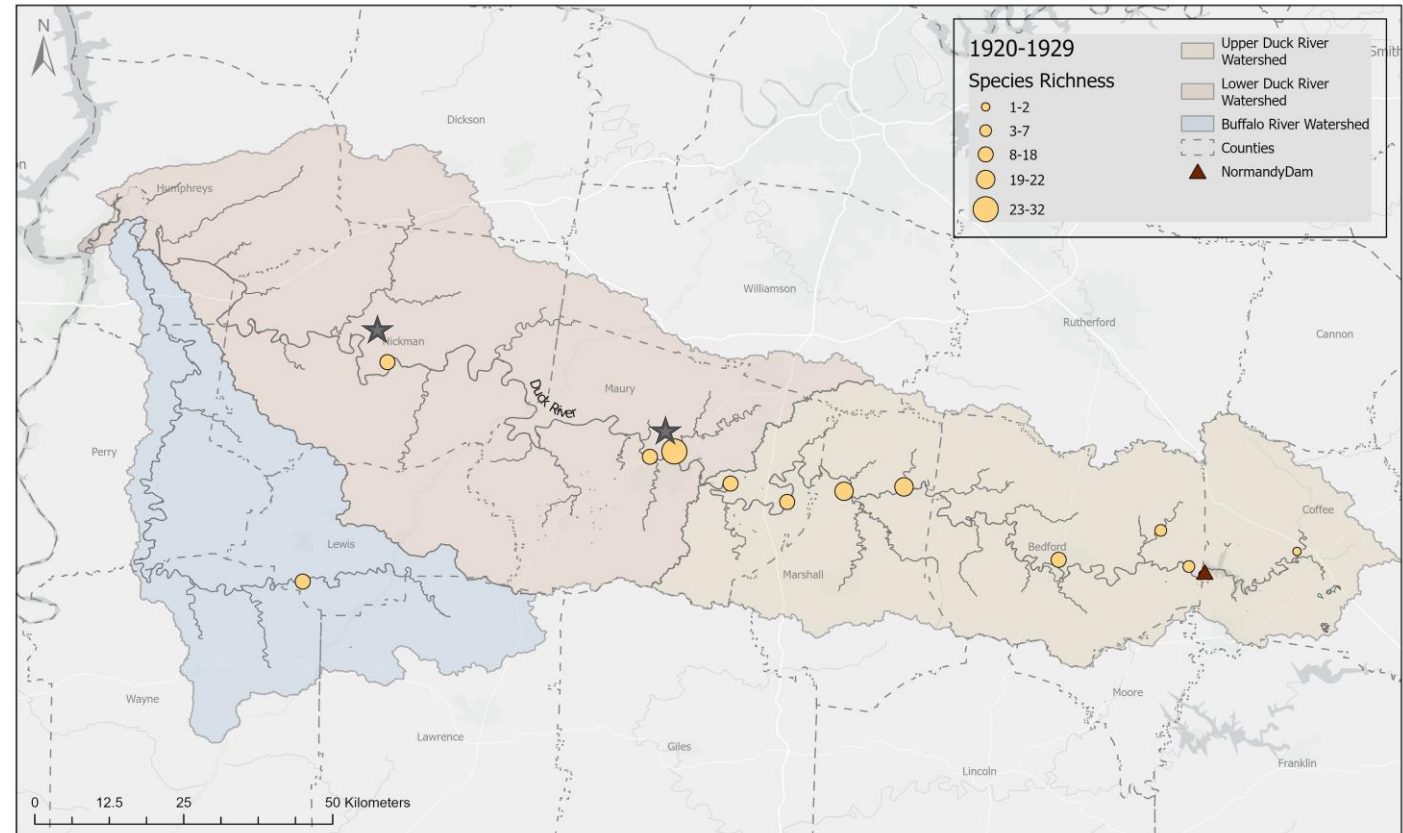
- Species richness of 45 reported at Columbia (Hinkley and Marsh 1885)
  - Large individuals
- Mill dam construction began throughout drainage (LaForest and Oliveira 1979)





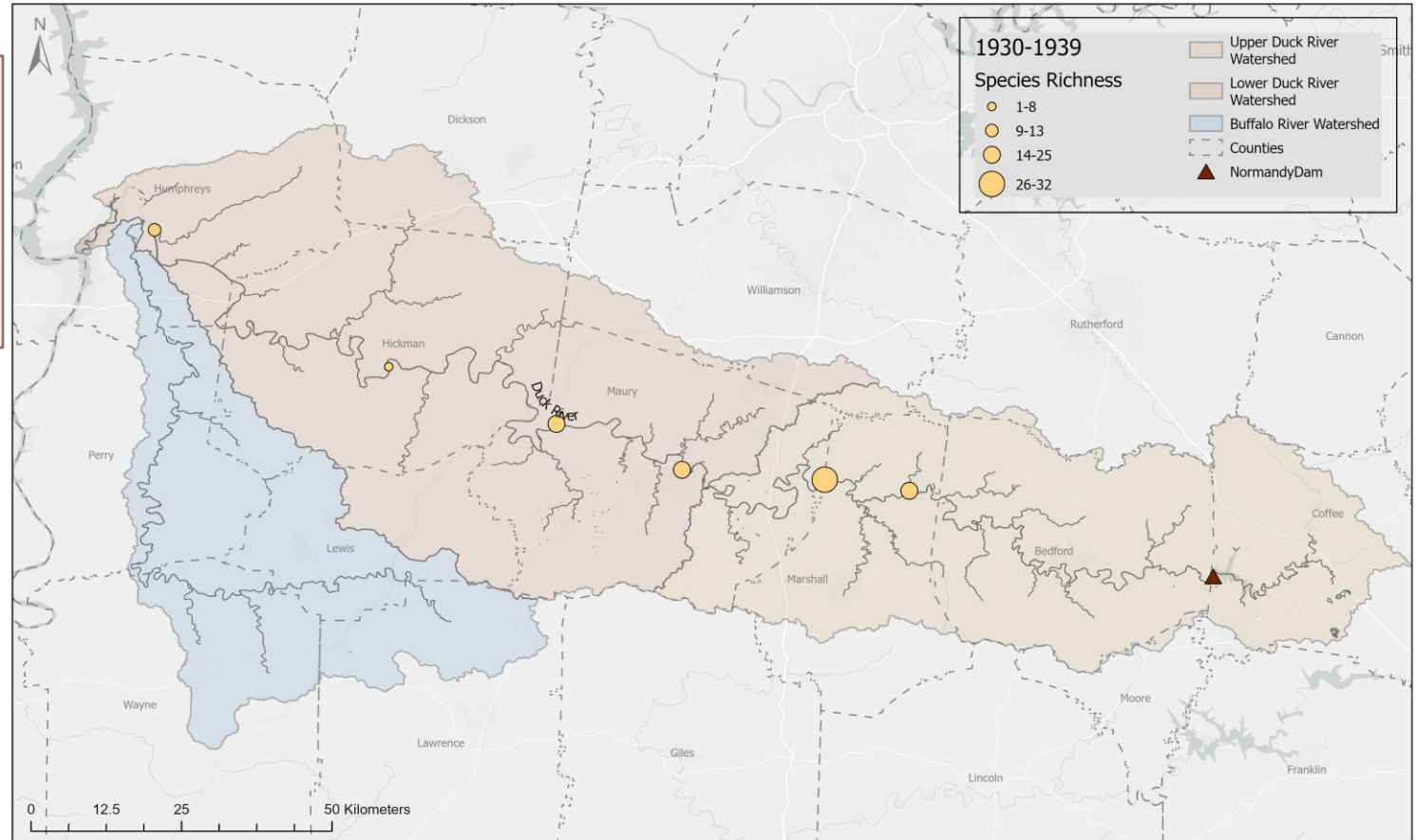
# 1920-1929

- 63 species found
- Highest richness at Columbia
- Species rich sites throughout drainage
- Lower levels of live individuals in Centerville attributed to **iron ore mining** between Columbia and Centerville (Ortmann 1924)



# 1930-1931

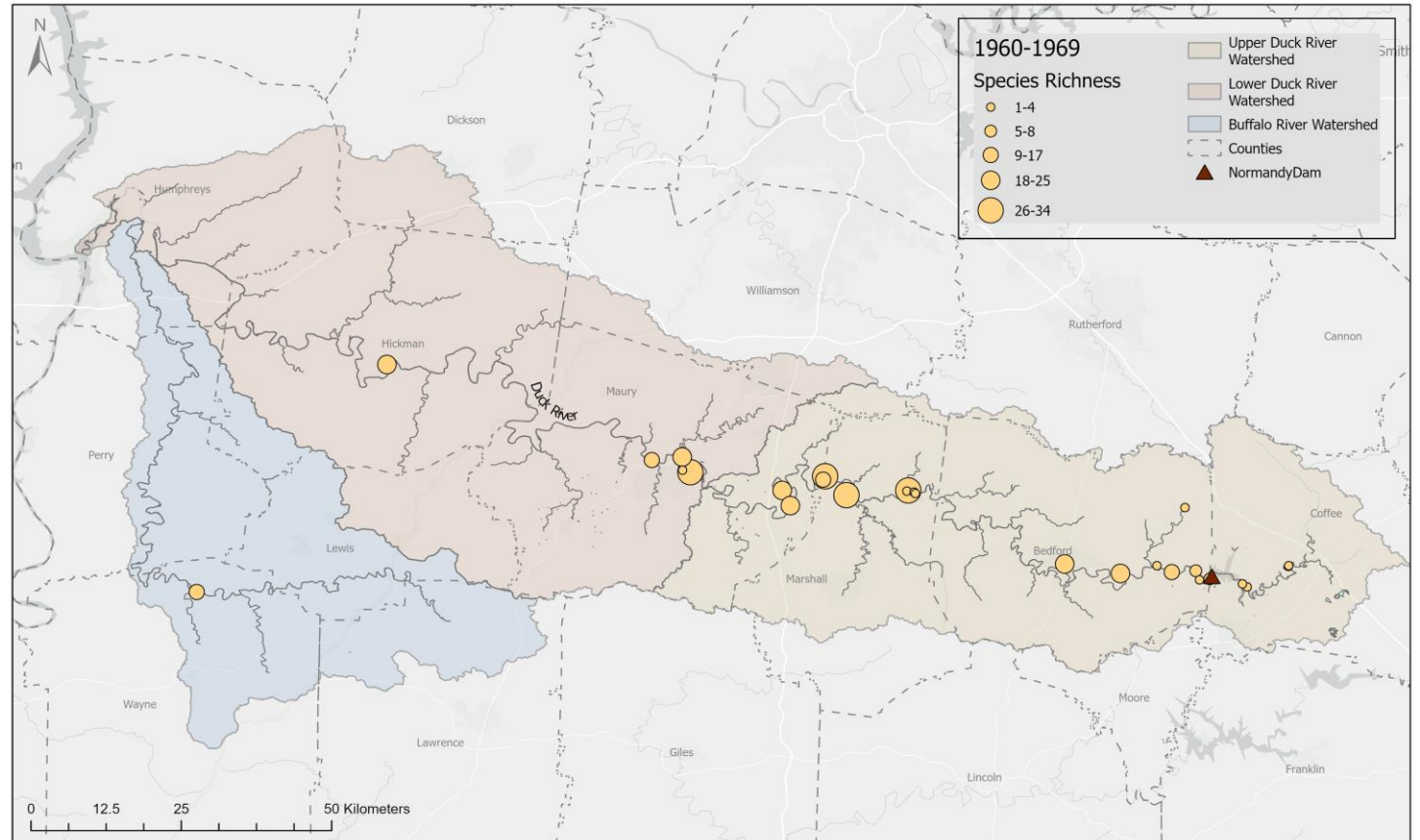
- River described as “paved” with mussels (Van der Schalie and Goodrich 1931)





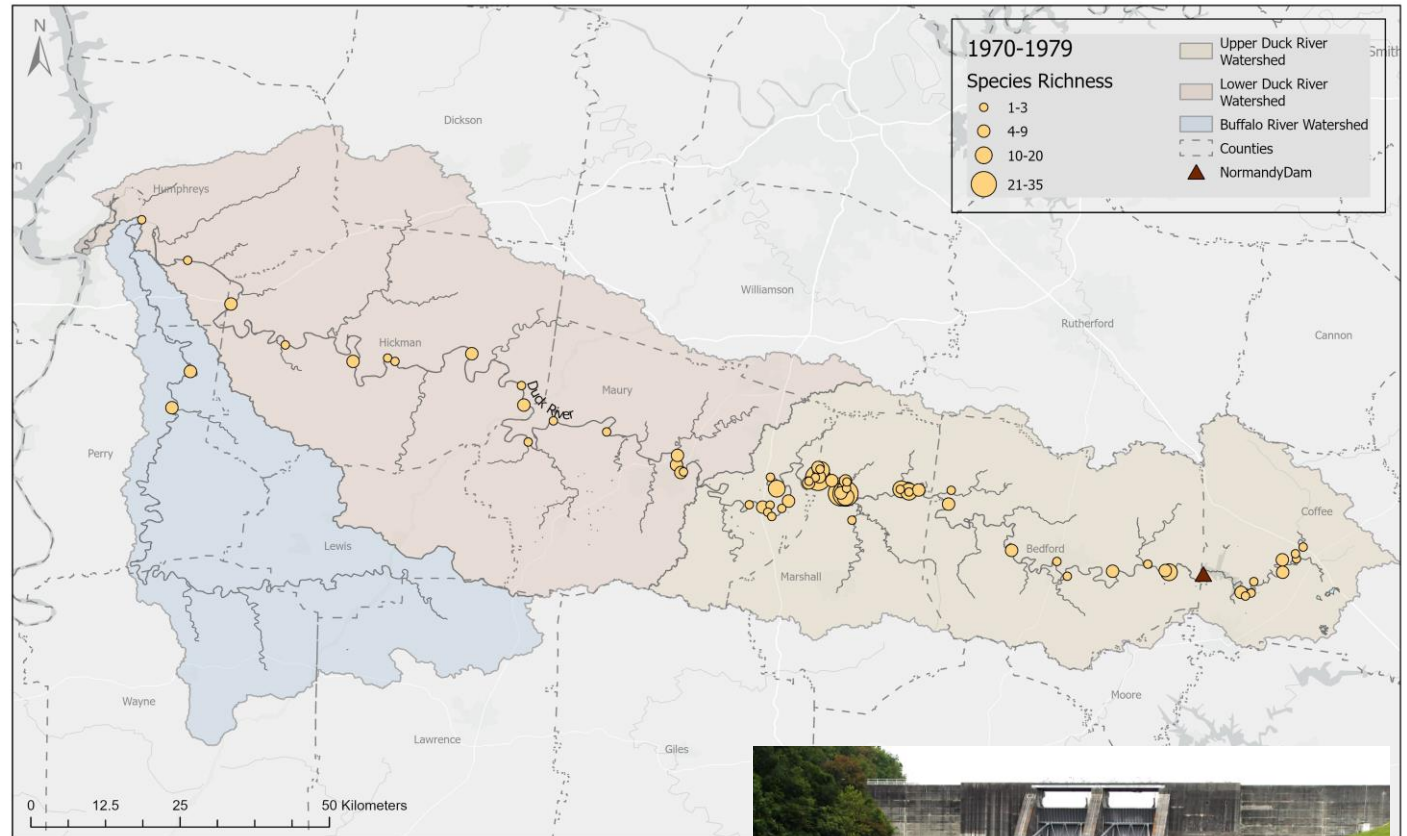
# 1960-1969

- 24% reduction in overall species richness since 1920s (Isom and Yokley 1968)
  - (48 vs 63 species)
- Noted that physical habitat had not been altered, but municipal sources of pollution may have contributed to declines
  - Industry, phosphate ore mining, sedimentation



# 1970-1979

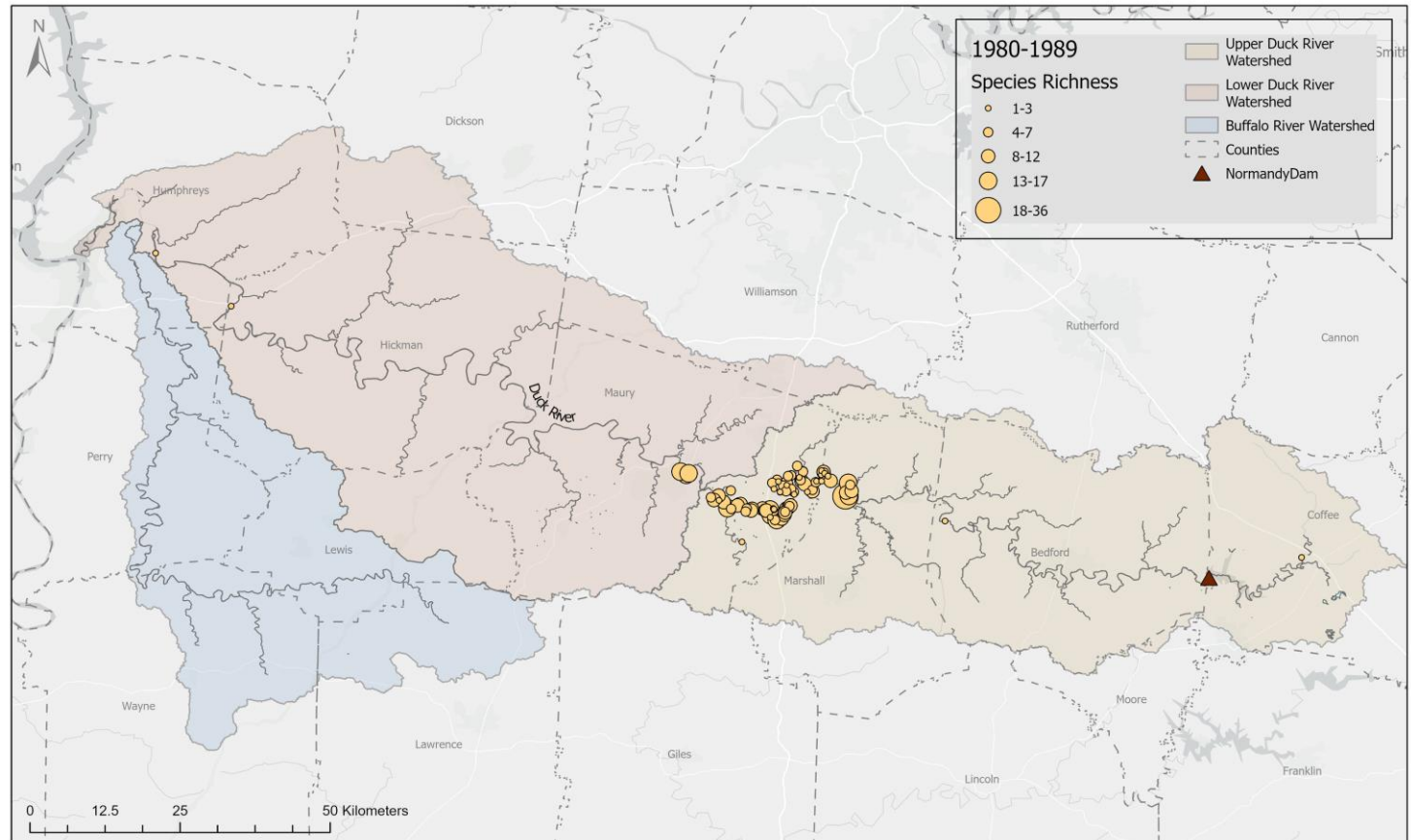
- Species richness and abundance declines (Van der Schalie and Goodrich 1972)
- Clean Water Act 1972
- Endangered Species Act 1973
- Normandy Dam 1976
- 1979: TVA began monitoring at 22 sites above Columbia due to Columbia Dam project





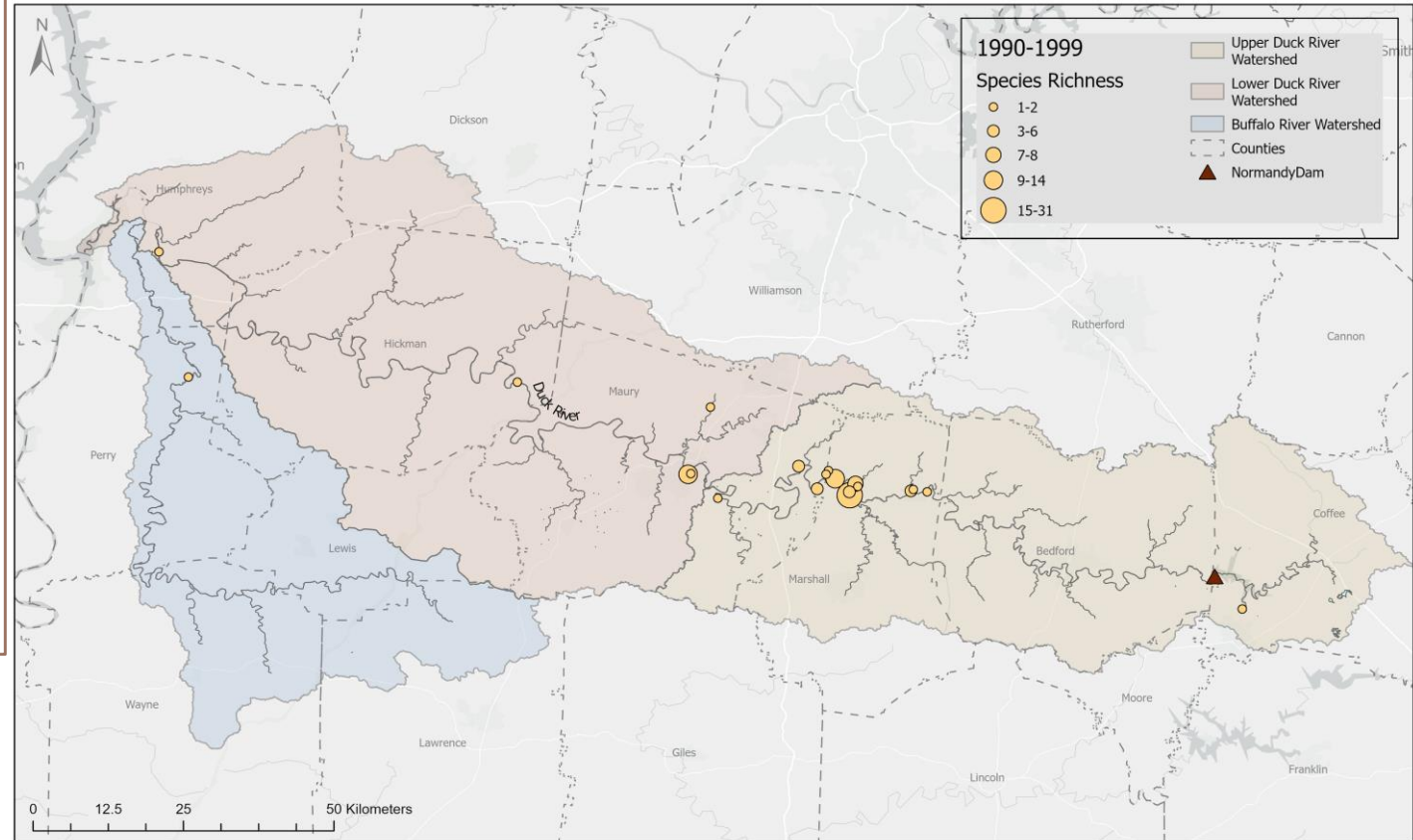
# 1980-1989

- Species richness remained stable, but mussel abundance **increased** in 1988



# 1990-1999

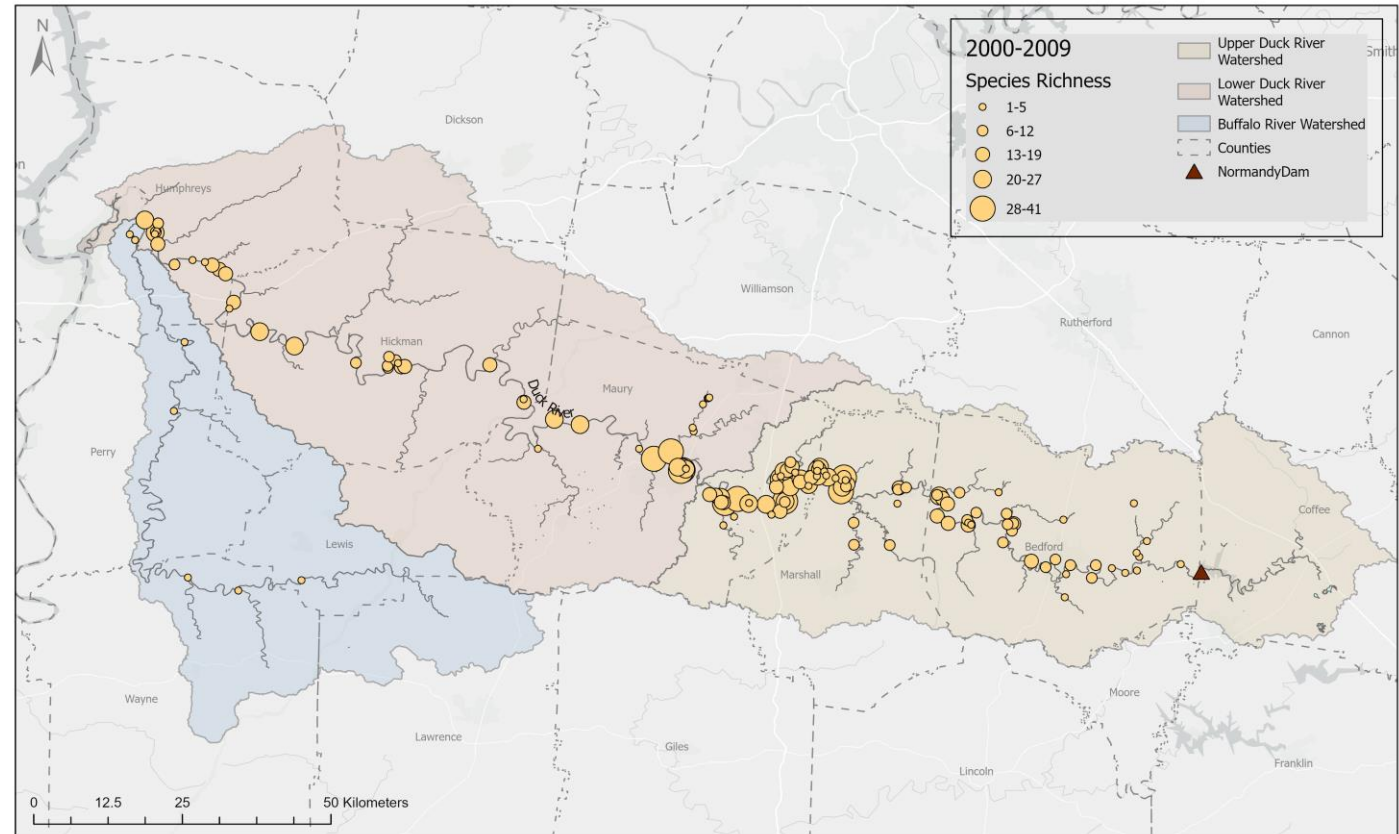
- TVA Reservoir Release Improvement Initiative
- Normandy: Discharge regulation and improved dissolved oxygen





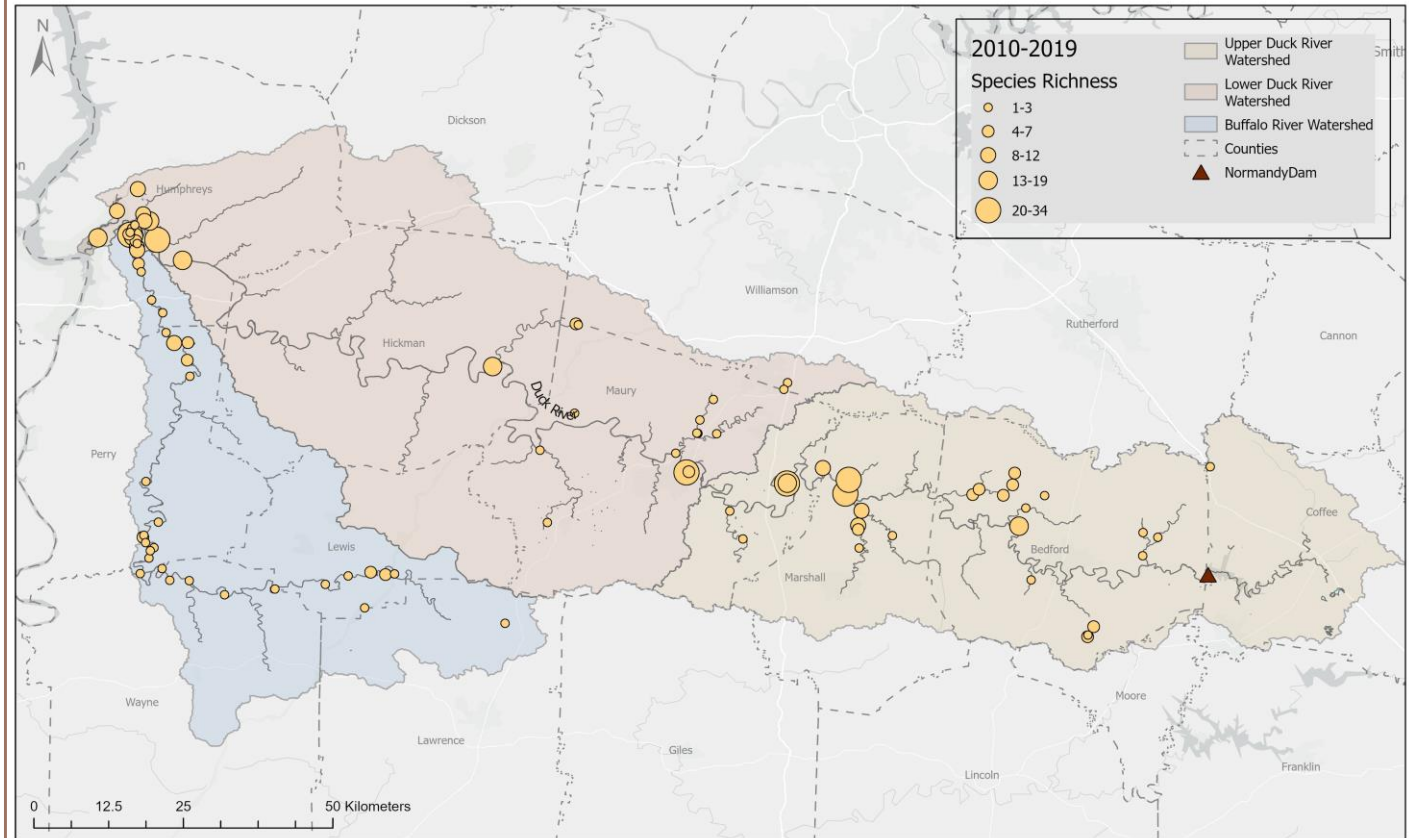
# 2000-2009

- Drainage-wide survey led by Steve Ahlstedt in 2001-2002: **54 species**
- 32 species below Centerville (Schilling and Williams 2002)
- Significant increase in species richness and mean abundance compared to 1979 and 1988
- Loss of 21 species since historical surveys began
- Reintroduction and Augmentation Plan finalized



# 2010-2019

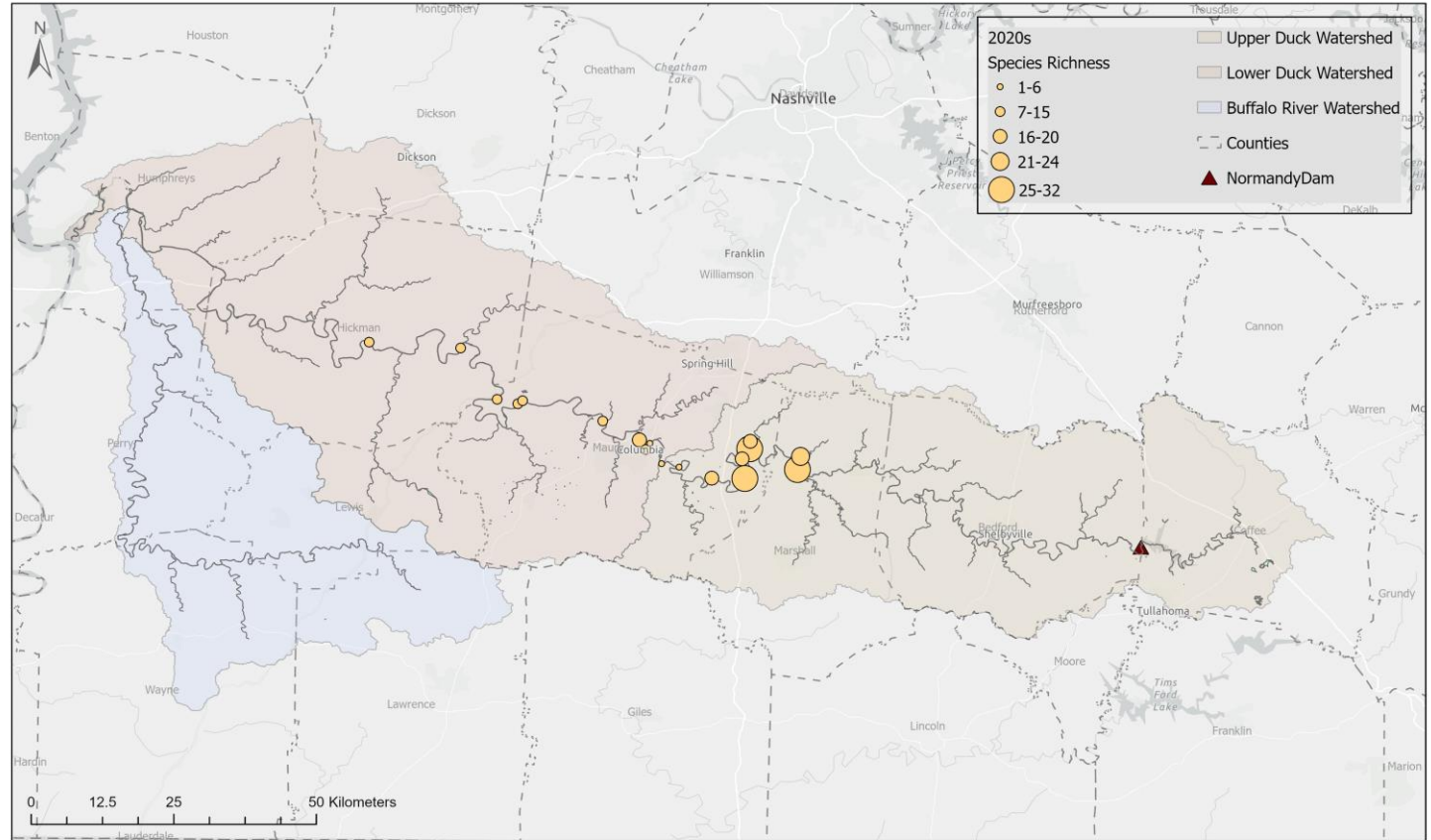
- Drainage-wide tributary surveys
  - Buffalo River (Reed) and middle and upper tributaries (Irwin)
- 2013: Reintroductions initiated for several species





# 2020-2023

- 5-year Monitoring
  - Evidence of reintroduction success
- 376% increase in Round Hickorynut abundance at Venable Spring
- Densities of most species stable since 2010, although some declines



**Fluted Kidneyshell**



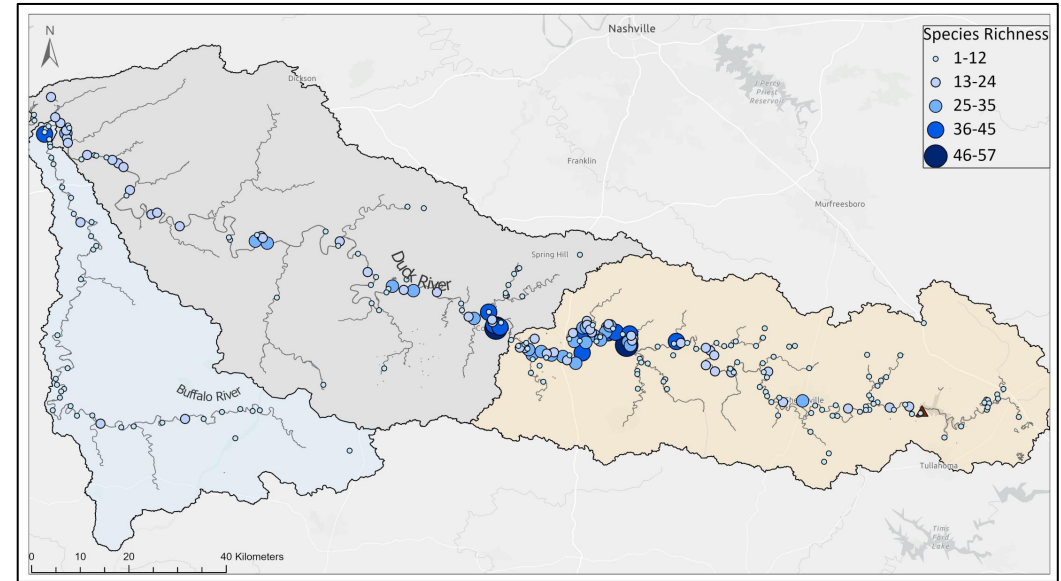
**Snuffbox**



**Pink Mucket**

# Take Homes

- The Duck is a mussel hotspot, but is not without threats
  - Habitat loss/quality reduction
  - Normandy
- Recovery made possible by policy and dedicated collaboration
- Monitoring gaps exist, but they present opportunities to fill knowledge gaps
  - Assess additional reintroduction locations
- Future studies: what makes Duck mussels so healthy?



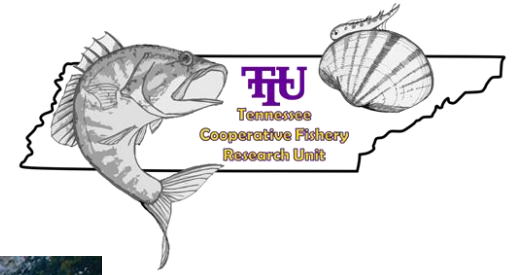


# Acknowledgements

- Funding: Tennessee ES Office: Dan Elbert and Andy Ford
- Gerry Dinkins (UT Knoxville)
- Jason Wisniewski (TWRA)
- Dillon Blankenship, David Withers, David Lincicome (TDEC)
- Todd Amacker and Hunter Terrell (TVA)
- Jamie Smith (NCMNS)
- Don Hubbs (DJH Environmental Services, LLC)
- Jenny Isham (Tennessee Tech)



# Questions



**Contact for References or Questions:**  
**[kirwin@tnitech.edu](mailto:kirwin@tnitech.edu)**